

PARK RESIDENCE

CONTEMPORARY LUXURY LIVING

 **JOSEPHCHALHOUB** REAL ESTATE
DEVELOPMENT



DISCOVER

PARK RESIDENCE

An exclusive residential retreat where luxury meets nature. Nestled next to a picturesque park, this 3-story building offers a unique living experience in the heart of **Faneromenis** in Larnaca, Cyprus.



PARK RESIDENCE

LOCATION

Park Residence is ideally situated adjacent to the lush **Patticheio Park** and within close proximity to the picturesque **Salt Lake**, providing residents with a perfect blend of urban convenience and access to cultural and natural beauty.



LARNACA SALT LAKE

PATTICHEIO MUNICIPAL THEATRE

PATTICHEIO PARK

PARK
RESIDENCE





PATTICHEIO MUNICIPAL THEATRE

SALT LAKE

PATTICHEIO PARK

PARK
RESIDENCE

Breathe in the fresh air and start your day with the beauty of nature just outside your window, with the **Salt Lake** and **Patticheio Municipal Theatre & Park** serving as an extension of your living space. Delight in leisurely strolls, invigorating morning jogs, or simply relax in the peaceful ambiance of your surroundings.






LIVE BEYOND EXPECTATIONS

WHERE LUXURY MEETS NATURE





Park Residence offers a range of carefully crafted apartments, each boasting luxurious finishes and breathtaking views.

The living spaces at **Park Residence** exemplify uncompromising quality, blending sophistication with comfort to create an unparalleled living experience. Designed for *modern living*, these spaces offer a perfect balance of *luxury and functionality*, ensuring a contemporary lifestyle for residents.



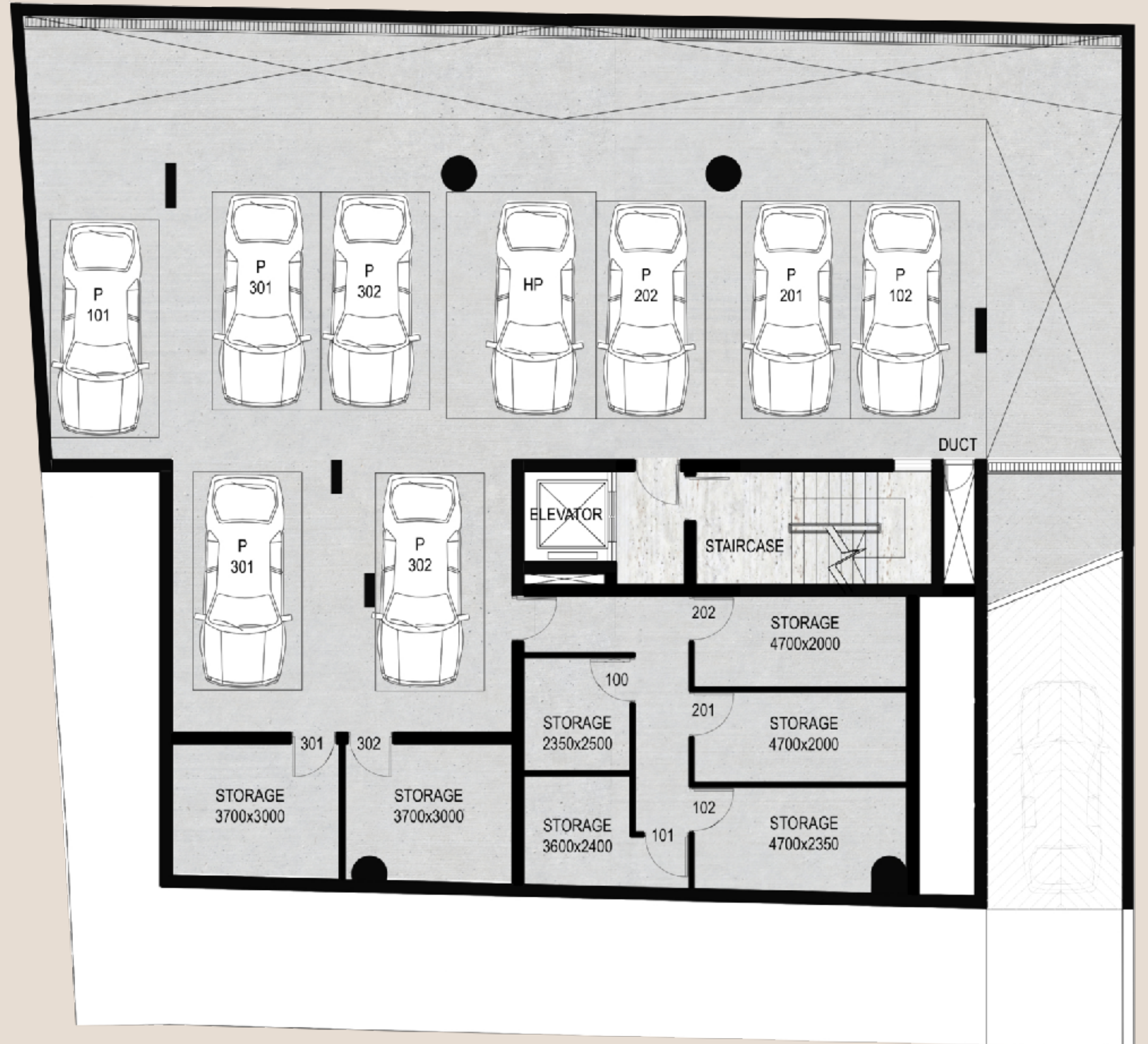


FLOOR PLANS



BASEMENT

The basement at Park Residence offers ample parking space, accommodating up to 9 cars, ensuring convenient and secure parking for residents. Additionally, the basement features seven storage rooms, providing residents with extra space for their belongings.



Basement ▶

Ground Floor ▶

First Floor ▶

Second Floor ▶

Third Floor ▶

Rooftop Garden ▶



GROUND FLOOR

3 BEDROOM APARTMENT

SIZE 124 SQM

TERRACE 52 SQM

PRIVATE LOBBY 35 SQM

2 PRIVATE PARKINGS

Basement ▶

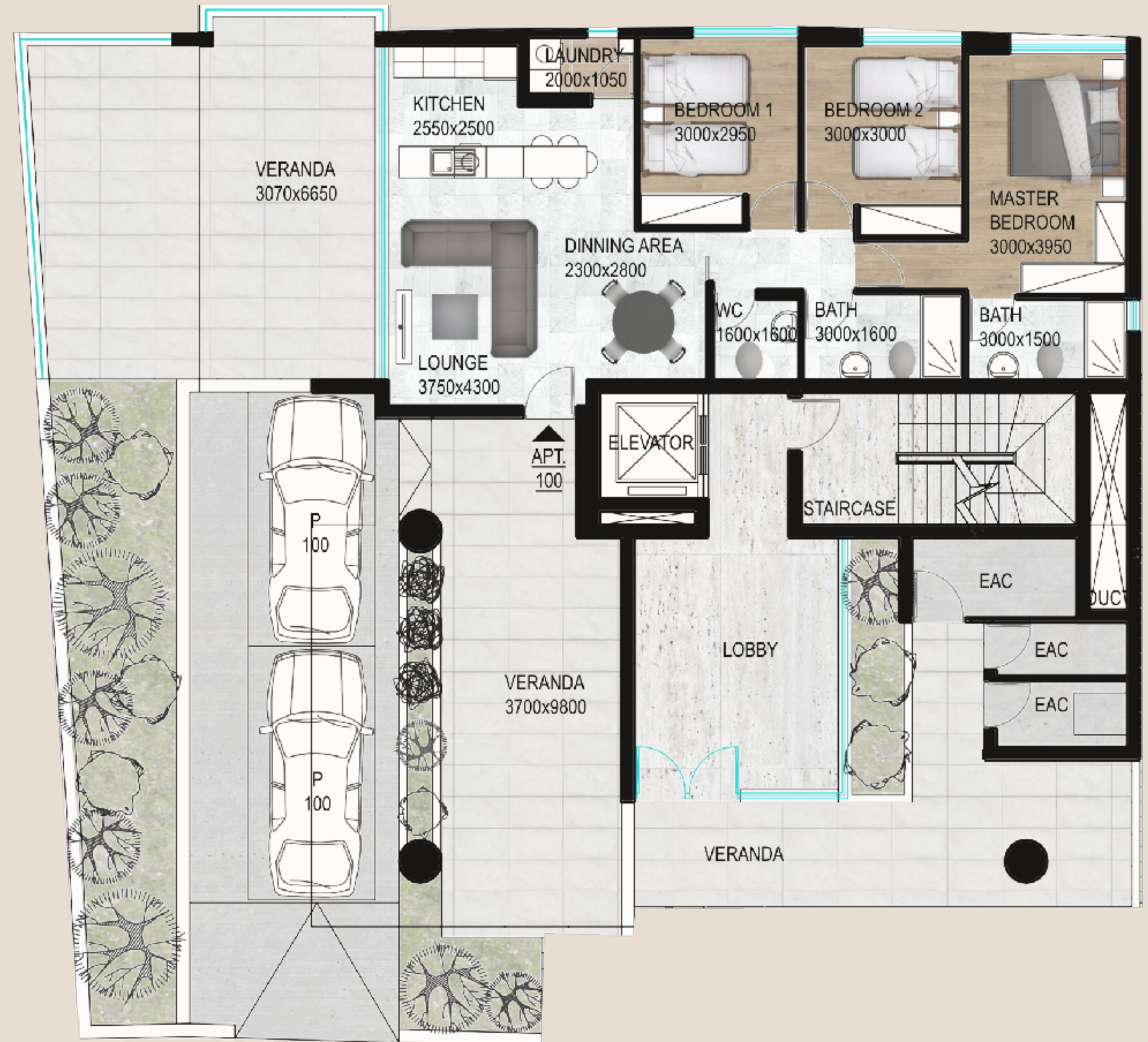
Ground Floor ▶

First Floor ▶

Second Floor ▶

Third Floor ▶

Rooftop Garden ▶



FIRST FLOOR

2 BEDROOM APARTMENTS

APARTMENT 101:

106 SQM

APARTMENT 102:

115 SQM

Basement ▶

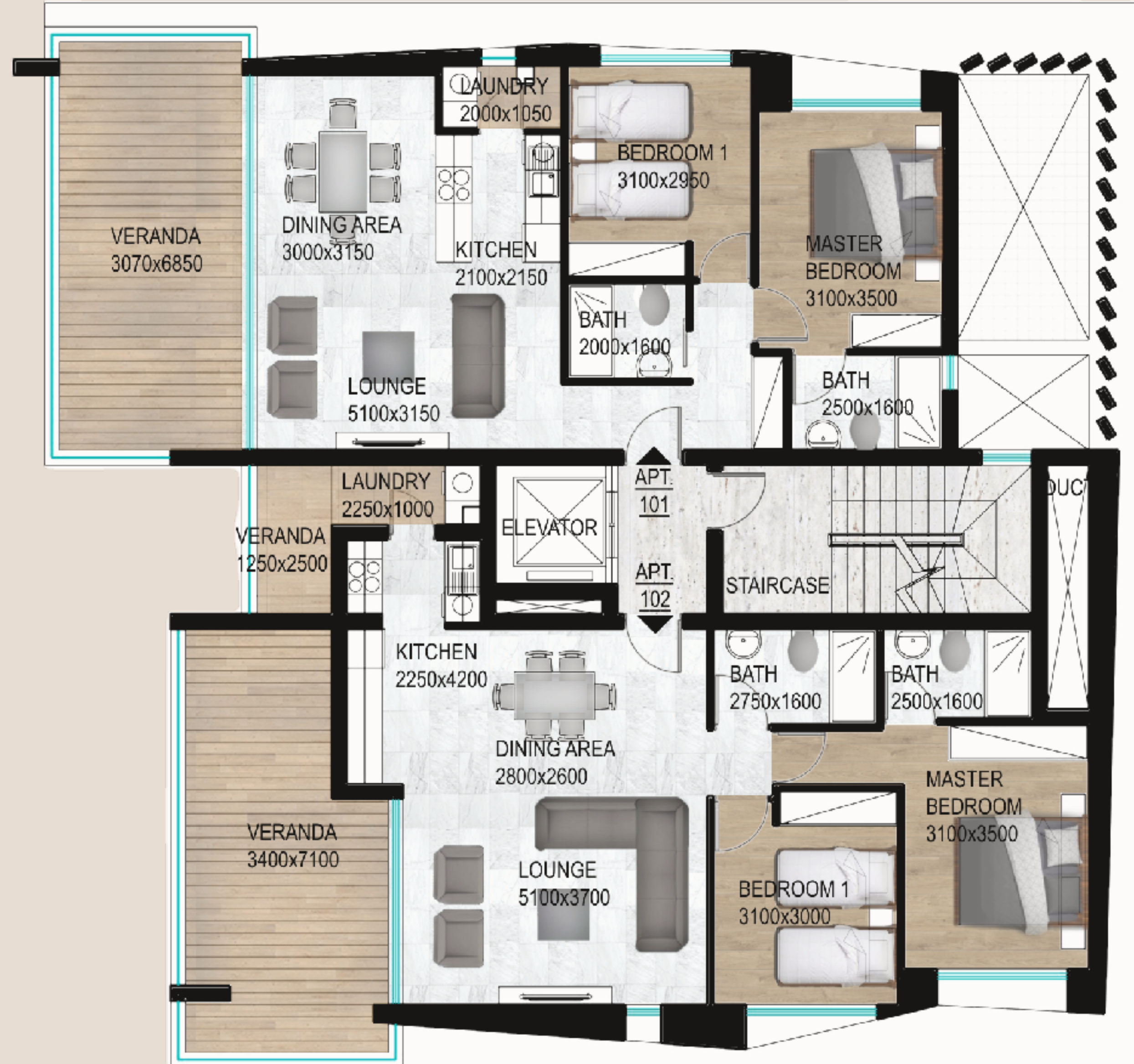
Ground Floor ▶

First Floor ▶

Second Floor ▶

Third Floor ▶

Rooftop Garden ▶



SECOND FLOOR

2 BEDROOM APARTMENTS

APARTMENT 201:

106 SQM

APARTMENT 202:

115 SQM

Basement ▶

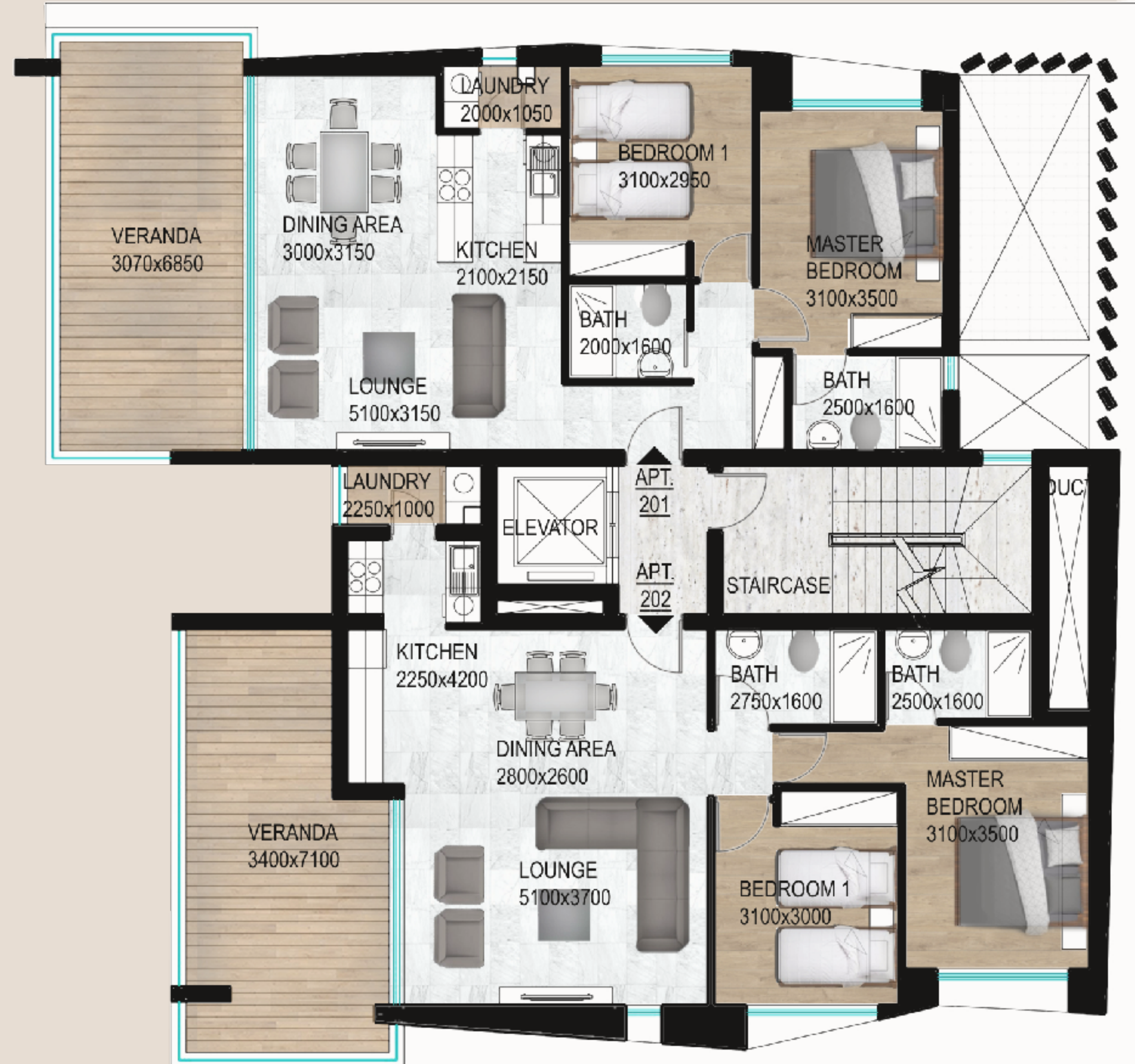
Ground Floor ▶

First Floor ▶

Second Floor ▶

Third Floor ▶

Rooftop Garden ▶



THIRD FLOOR

2 BEDROOM APARTMENTS WITH ROOF TERRACE

APARTMENT 301:

106 SQM

54 SQM ROOF GARDEN

2 PARKINGS

APARTMENT 302:

115 SQM

41 SQM ROOF GARDEN

2 PARKINGS

Basement ▶

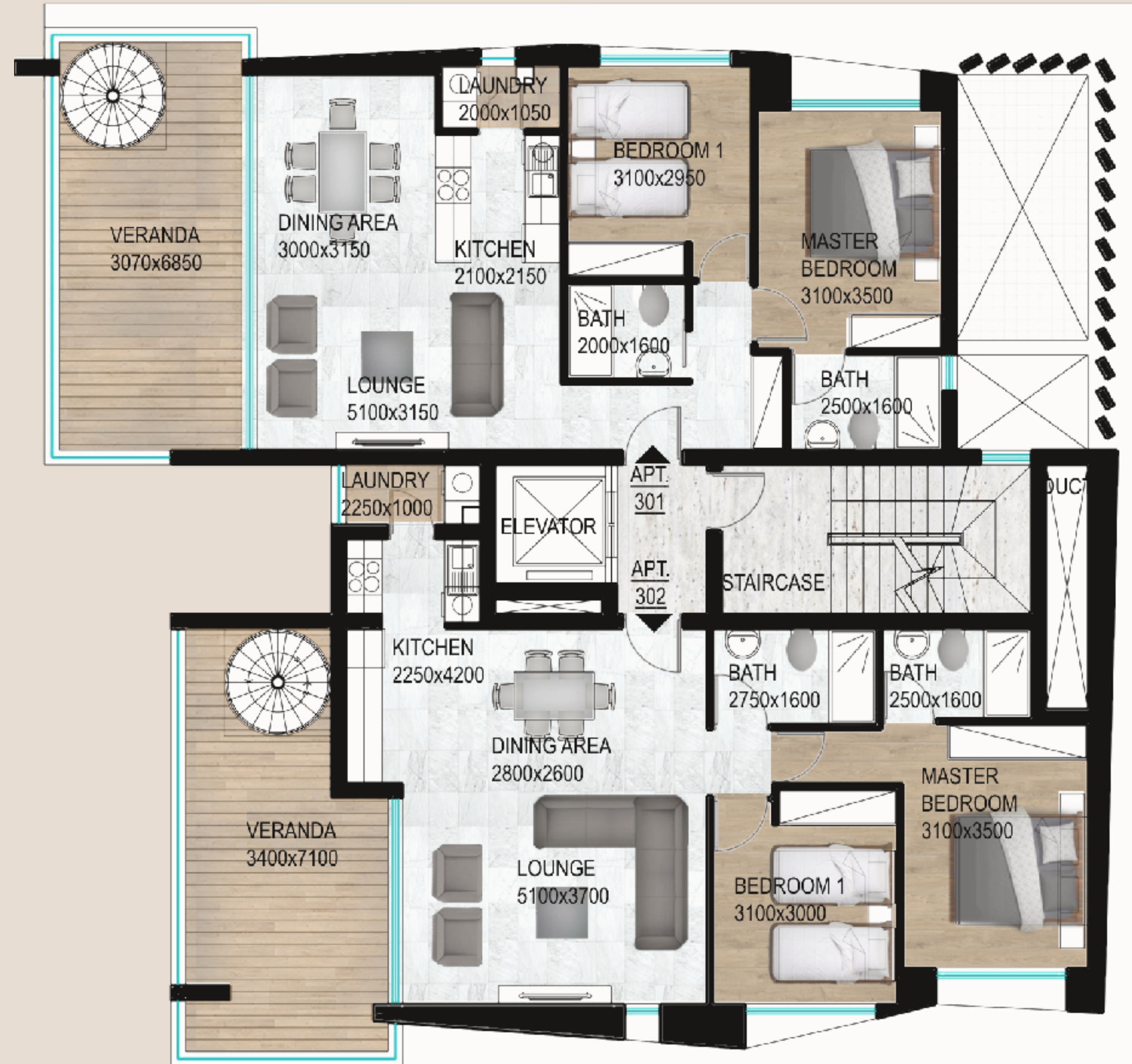
Ground Floor ▶

First Floor ▶

Second Floor ▶

Third Floor ▶

Rooftop Garden ▶



ROOFTOP GARDEN

The third-floor apartments at Park Residence feature stunning roof gardens, offering residents a private outdoor oasis with Apartment 301 boasting a 54-square-meter rooftop garden and Apartment 302 featuring a 41-square-meter rooftop garden. These rooftop spaces provide the perfect setting for outdoor gatherings, relaxation, and enjoying the beautiful views of the surrounding area.

- Basement* ▶
- Ground Floor* ▶
- First Floor* ▶
- Second Floor* ▶
- Third Floor* ▶
- Rooftop Garden* ▶



GET IN TOUCH with us today to schedule a private tour and secure your place in the epitome of luxury living at **Park Residence**.



“Exclusive Properties. Exclusive People.”



CONTACT

✉ info@josephchalhoub.com

☎ +(357) 96 95 93 94
+(961) 1 483 148

📍 Dimitri El Hayek Street,
Central Business Center,
Beirut, Lebanon

🌐 JosephChalhoub.com



SCAN ME

[facebook](#) [instagram](#) [linkedin](#)

